

# WELCOME TO



CARTOON NETWORK™

ADVENTURE ACADEMY

## LESSON 4:

Costing the  
*We Bare Bears* Friendship  
Garden Challenge.





## LESSON 4: COSTING WE BARE BEARS FRIENDSHIP GARDEN CHALLENGE.

You've created a great design but how much will it cost? Check out the prices of the:

- Flowers, shrubs and trees you've used.
- Any special items such as water features.
- And can you estimate an approximate price for the play equipment?

Don't forget that any safety features such as floodlighting will have to be paid for too.



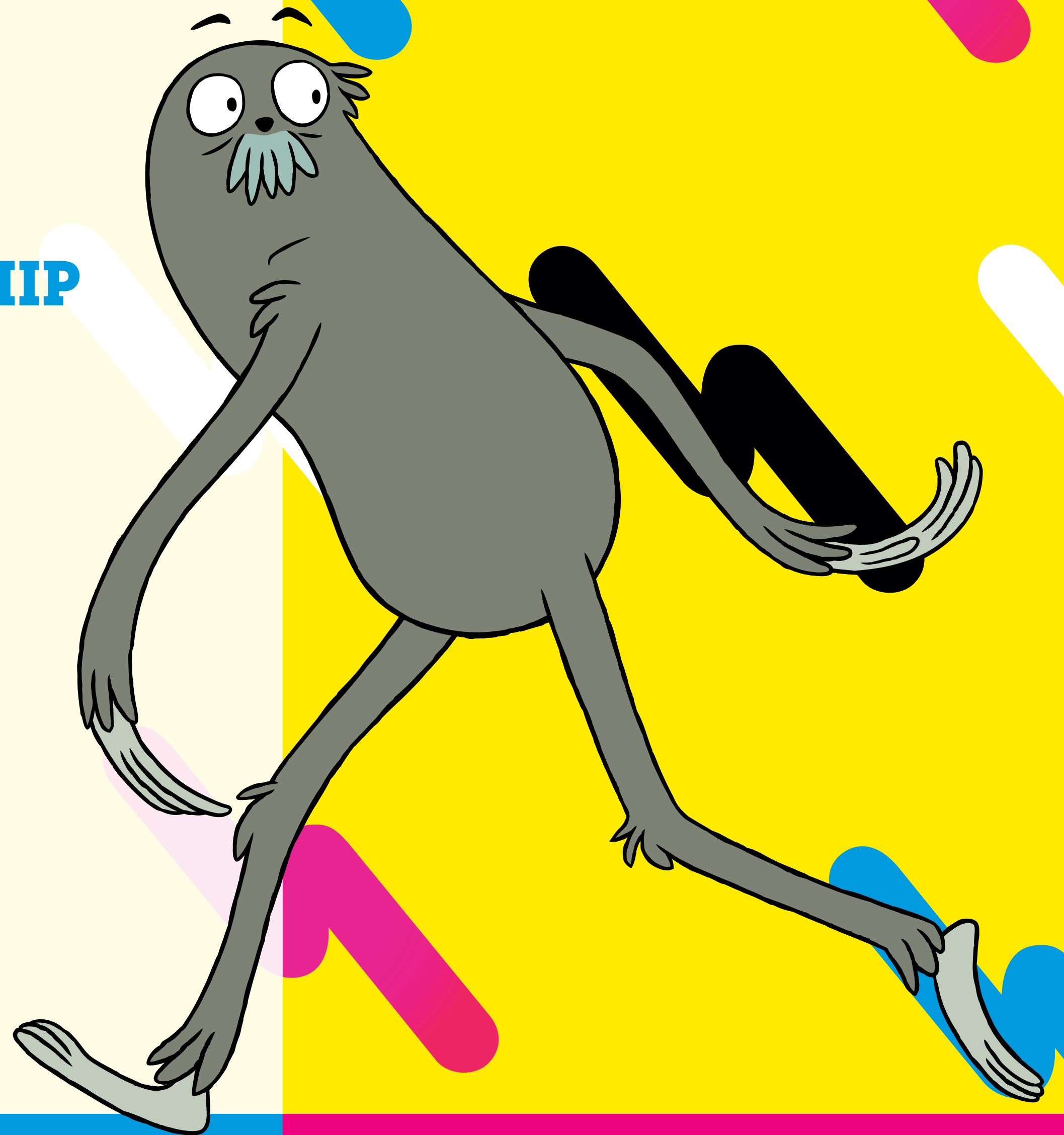
**CLICK TO PLAY**

## LESSON 4: MEASURING WE BARE BEARS FRIENDSHIP GARDEN CHALLENGE.

You can also use Maths to help you create your *We Bare Bears* Friendship Garden by:

- Mapping it carefully to include all items you've chosen.
- Measuring it exactly so the features are in proportion.
- Ensuring the whole plan is drawn accurately to scale.

**DON'T FORGET GOOD PRESENTATION IS VITAL!**







CARTOON NETWORK™

ADVENTURE ACADEMY

That's the end of Lesson 4  
**BYE FOR NOW**  
From *We Bare Bears*!